



## Health and Safety Policy

<b>Policy Title</b>	Health & Safety Policy
<b>Statutory</b>	Yes
<b>Policy Version</b>	3
<b>Policy Author</b>	Mrs A Majcher
<b>Ratified By</b>	FGB
<b>Date Ratified</b>	July 2021
<b>Review Period</b>	1 year
<b>Next Review Period</b>	Summer 2022
<b>Distributed To</b>	All staff
<b>To be published on website</b>	No
<b>Changes to this policy</b>	Staff names updated
This policy has been impact assessed against race, gender and disability and no adverse impact has been identified.	
Any Bucks Council updated version will be automatically adopted by the school.	

## **HEALTH AND SAFETY POLICY FOR SCHOOLS**

### **Carrington Junior School**

Where appropriate, this policy should be read in conjunction with the Buckinghamshire Council Health and Safety Policy.

### **PART 1: GOVERNING BOARD STATEMENT OF INTENT**

Effective health and safety management is integral to delivering our ambition for excellence in education and our performance as a school. We are committed to high standards of health, safety and wellbeing and will take all reasonable steps to meet our responsibilities under the Health and Safety at Work Act, the Management of Health and Safety at Work Regulations, other relevant health and safety legislation and the Regulatory Reform (Fire Safety) Order. Our overall objective is to provide and maintain a safe and healthy environment for our staff and pupils and others with whom we work.

We will achieve this by:

- Taking reasonable steps to make sure that the school is following the employer's policy and procedures e.g. through regular discussion at governance meetings;
- Promoting a sensible and proportionate approach to health and safety, making use of competent health and safety advice when required;
- Working in close partnership with the Head Teacher and senior management team to support sensible health and safety management and to challenge as appropriate;
- Developing and maintaining a positive health and safety culture with an emphasis on continually improving our performance taking into account human and cultural factors;
- Ensuring staff receive adequate information, instruction and training to enable them to carry out their responsibilities competently;
- Ensuring that health and safety management is an integral part of decision making and organisational processes;
- Providing a safe and healthy working environment for our staff, pupils and others working in the school;
- Ensuring safe working methods are in place and providing safe equipment.
- Communicating and consulting with our staff and their trade union representatives;
- Complying with statutory requirements and where possible best practice;
- Investigating and learning the lessons from accidents, incidents, near misses and work related ill health incidents;
- Monitoring and reviewing systems and preventative measures to make sure they are suitable, sufficient and effective;

- Ensuring adequate resources are available to fulfil our health and safety responsibilities and objectives;
- Working with and monitoring our contractors to ensure consistent and comparable health and safety standards.

We recognise that overall responsibility for health and safety lies with all levels of management having direct responsibility for activities and staff under their control. However, all staff have a legal and moral responsibility to take reasonable care for the health and safety of themselves and for others who may be affected by their acts or omissions.

**Name of Head Teacher:** Mrs A Majcher

**Signature:** .....

**Date:** / /

**Name of Chair of Governors:** Mrs A Sheddick

**Signature:** .....

**Date:** / /

**Review date:** Summer 2022

## **PART 2: RESPONSIBILITIES AND ORGANISATION**

### **1. INTRODUCTION**

To comply with the Governing Board's Statement of Intent the following responsibilities have been assigned:

### **2. THE GOVERNING BOARD**

The Governing Board recognises its responsibilities for ensuring that suitable organisational arrangements are in place for the management and control of health and safety within the school and will endeavour to ensure that the local authority's policy is implemented with regard to its responsibility. In particular, we will ensure that:

- A written policy statement is created and communicated which promotes a positive attitude towards health and safety in staff and pupils;
- Responsibilities for health, safety and welfare are allocated to specific people and those people are informed of these responsibilities;
- A lead governor for health and safety is nominated;
- People have sufficient experience, knowledge and training to perform the tasks required of them;
- Clear procedures are created which assess the risk from hazards and produce safe systems of work;
- Health and safety performance is monitored and targets for improvement are set
- Ensuring that the site and premises is maintained in a safe condition and that sufficient funding is allocated;
- Seeking specialist advice on health and safety which the establishment may not feel competent to deal with;
- The school's health and safety policy is reviewed regularly (at least once annually ) and implementing new arrangements where necessary;
- Our management of health and safety considers the needs of anyone with a protected characteristic under the Equalities Act

### **3. THE HEAD TEACHER**

Leadership of health and safety is about managing risk sensibly – not trying to eliminate it altogether. The Head Teacher will provide visible leadership to the whole school so that staff feel motivated, supported and empowered to focus on the things that really matter.

The Head Teacher is responsible for all staff and activities under their control and will ensure that the requirements of relevant safety policies and procedures are implemented and complied with. In particular, they will:

- Ensure that the school is following Buckinghamshire Council's Health and Safety Policy and has effective arrangements for managing the real health and safety risks at the school.

- Be fully committed to the Governing Board's Statement of Intent, ensuring that a positive health and safety culture is demonstrated and promoted through their leadership.
- Act as the "Responsible Person" under the Fire Safety Order within the School.
- Maintain effective communications with employers, governors, and the school workforce, and give clear information to pupils and visitors, including contractors, regarding the significant risks on site;
- Nominate themselves or a senior manager as the Health and Safety Co-ordinator;
- Undertake all relevant training appropriate to their role and ensure staff are given adequate information, instruction, training and supervision to carry out their duties, paying particular attention to new/inexperienced employees and trainees;
- Make sure that staff understand their responsibilities and know how to access support and advice to help them manage risks responsibly.
- Ensure that appropriate risk assessments are undertaken by competent persons and that suitable control measures are taken on a risk basis to manage the health and safety risks to staff and any other people who may be affected by the school's activities;
- Ensure that risk assessments are undertaken in relation to directly managed staff, for example, job based risk assessments, stress risk assessments, return to work risk assessments, personal emergency evacuation plans;
- Ensure safe systems of work and procedures are developed and are implemented;
- Ensure prompt action is taken to resolve any situations that may adversely affect the health and safety of staff or other people;
- Ensure that they seek timely assistance and advice where expert help is required from Health and Safety Consultancy team;
- Ensure that all plant and work equipment provided is: selected through a risk assessment process, suitable, properly maintained and subject to all necessary tests and examinations;
- Ensure that accidents and incidents (including near misses and violence and aggression) are reported to County and the HSE (where appropriate) and investigated and the findings acted upon without delay;
- Ensure there are meaningful, effective arrangements in place for consulting employees and their trade union representatives on health and safety matters that affect them;
- Ensure information that may assist safety representatives in their role is provided to them;
- Complete the school's Annual Health and Safety Compliance Report to the Managing Director, Children's Social Care and Learning;
- Participate and make recommendations to the Governing Board in relation to external independent audits carried out by the County Council or other bodies
- Report to the Governing Board any health and safety issues which cannot be resolved;

- Ensure the requirements of the Occupier's Liability Acts 1957/1984 are complied with to reduce risk to lawful and unlawful visitors;
- Monitor and review health and safety performance through:
  - termly health and safety inspections of work areas/practices;
  - setting health and safety targets and objectives through appraisals and other supervisory reviews;
  - reviewing incidents and accidents;
  - monitoring commissioned and contracted work for compliance;
  - ensuring that the management of health and safety considers the needs of anyone with a protected characteristic under the Equalities Act;
  - ensuring audit action plans are implemented;
  - reporting to the Governing Board at least annually on the school's health and safety performance

#### **4. LEAD GOVERNOR FOR HEALTH AND SAFETY**

The Lead Governor has the following responsibilities:

- To be fully and visibly committed to the Governing Board's Statement of Intent for health and safety;
- To scrutinise and review health and safety performance;
- To provide support and challenge to the Head Teacher and the Governing Board in fulfilling their health and safety responsibilities;
- To ensure in particular that risk assessments of the premises and working practices are carried out and documented;
- To arrange a termly inspection of the school by either themselves or another Governor and to provide a report to the Governing Board.

#### **5. RESPONSIBILITIES OF THE SENIOR LEADERSHIP TEAM (SLT)**

The SLT will support the Head Teacher with the overall management of health and safety in the school. This will include:

- Providing leadership by ensuring health and safety is considered as part of every decision;
- Considering the health and safety impact of any new initiatives;
- Informing the Head Teacher of any health and safety issues that affect the school;
- Agreeing strategic health and safety initiatives;
- Monitoring the overall implementation of the schools health and safety policy in their areas of control and agreeing the annual health and safety report.

#### **6. HEALTH AND SAFETY COORDINATOR (HEAD TEACHER OR A SENIOR MEMBER OF STAFF (SLT))**

The Head Teacher takes the lead for health and safety on site. She often provides the focal point for the school's health and safety management arrangements. Their school wide roles may include:

- management and monitoring of purchasing and contracting procedures to ensure risks are effectively managed;
- advising contractors of site specific risks and overseeing their activities on site;
- ensuring staff and visitors are aware of the on site procedures and the precautions to follow;
- accident and incident reporting;
- implementation, monitoring and review of training procedures;
- preparation of reports and returns for the school leadership team

The Health and Safety Coordinator has the following responsibilities to:

- Attend appropriate health and safety training courses including IOSH Managing Safely and Fire Risk Assessor Training to enable them to discharge their duties effectively;
- Ensure that a fire risk assessment is completed for the school and that it is implemented and reviewed at least annually;
- Promote health and safety matters throughout the school and assisting the Head Teacher in the implementation of the County Council's and School's Health and Safety Procedures;
- Ensure the Fire Log, Asbestos Log and Legionella Log are kept up to date;
- Ensure that the Health and Safety Notice Board is kept up to date;
- Ensure the correct accident, incident and near miss reporting procedures are followed and that, where appropriate, accidents are investigated;
- Arrange termly health and safety inspections and ensuring follow up action is completed and records kept available for audits;
- Ensure appropriate procedures for school visits is followed;
- Participate in any Health and Safety Audits arranged by the County Council;
- Provide health and safety induction training for all staff;
- Provide basic fire awareness training for all staff at least every six months. Refer to training notes section 3.3 Health and Safety Policies and Procedures.
- Keep an up to date record of staff health and safety training;
- Ensure that all statutory inspections are completed and records kept;
- Make provision for the inspection and maintenance of work equipment;
- Ensure that emergency drills and procedures are carried out regularly and monitored for effectiveness and that records are kept;
- Monitor contractors on site and ensuring they consult the Asbestos Log before starting work.
- Coordinate and manage the annual risk assessment process for the school;

- Coordinate performance monitoring processes;
- Manage records of all health and safety activities including management of building fabric and building services in liaison with County and other contractors;
- Advise the Head Teacher of situations or activities which are potentially hazardous to the health and safety of staff, pupils and visitors;
- To ensure that staff are adequately instructed in safety and welfare matters about their specific workplace and the school generally.

## **7. TEACHING AND SUPPORT STAFF HOLDING POSITIONS OF SPECIAL RESPONSIBILITY**

This includes the Deputy Head Teacher and Caretaker. They have the following responsibilities to:

- Apply the school's Health and Safety Policy and the relevant health and safety Codes of Practice to their own department or area of work and be directly responsible to the Head Teacher for the application of the health and safety procedures and arrangements;
- Carry out regular health and safety risk assessments of the activities for which they are responsible;
- Checking compliance with job risk assessments and reviewing health and safety performance in staff appraisals/performance management reviews;
- Ensure that all staff they manage are familiar with the relevant health and safety Codes of Practice, for
  - their area of work;
- Resolve health, safety and welfare issues that staff refer to them, or refer to the Head Teacher any matters for which they cannot achieve a satisfactory solution within the resources available;
- Carry out regular inspections of their areas of responsibility to ensure that equipment, and activities are safe and record these inspections where required;
- Ensure, so far as is reasonably practicable, the provision of sufficient information, instruction, training and supervision to enable other staff and pupils to avoid hazards and contribute positively to their own health and safety;
- Investigate any accidents that occur within their area of responsibility.

## **8. HEADS OF SUBJECT DEPARTMENTS HAVE THE FOLLOWING SPECIFIC HEALTH AND SAFETY RESPONSIBILITIES:**

Curriculum Leaders have expertise in their topic areas and are often in the best position to advise or lead on the arrangements for assessing and managing risk in their department.

- The day to day management of health and safety within their department in accordance with the health and safety policy;
- Drawing up and reviewing departmental policies, procedures and risk assessments regularly (at least annually);



- Carrying out regular health and safety monitoring inspections of the department and making reports to the Head Teacher where appropriate;
- Ensuring follow up and remedial action is taken following health and safety inspections;
- Arranging for the appropriate subject specific health and safety training to be provided to all staff within the department;
- Passing on health and safety information received to the appropriate people;
- Acting on health and safety reports from above and below in the school hierarchy.
- Report all accidents, defects and dangerous occurrences to the Head Teacher and/or Health and Safety Coordinator.

## **9. CLASS TEACHERS**

Class teachers are expected to:

- Exercise effective supervision of their pupils, to know the procedures for fire, first aid and other emergencies;
- Follow the particular health and safety measures to be adopted in their own teaching areas as laid down in the relevant Codes of Practice;
- Give clear oral and written instructions and warnings to pupils when necessary;
- Follow safe working procedures;
- Require the use of protective clothing and guards where necessary;
- Make recommendations to their Head Teacher or manager regarding equipment and improvements to plant, tools, equipment or machinery;
- Integrate all relevant aspects of safety into the teaching process;
- Report all accidents, defects and dangerous occurrences to their manager.

## **10. SAFETY REPRESENTATIVES**

Safety representatives do not have responsibilities under this policy; however they do have functions as laid down in the Safety Representatives and Safety Committees Regulations.

The Governing Board believes that consulting employees on health and safety matters is important in creating and maintaining a safe and healthy working environment.

## **11. STAFF**

All of the school workforce play an important part in sensible health and safety management in schools. Staff involvement makes a vital contribution towards achieving safer and healthier workplaces, and helps develop sensible rather than over cautious approaches.

When developing learning opportunities, staff should focus on controlling the real risks, not eliminating all risks. Health and safety is about doing things safely, not finding reasons not to do them.

In particular staff must:

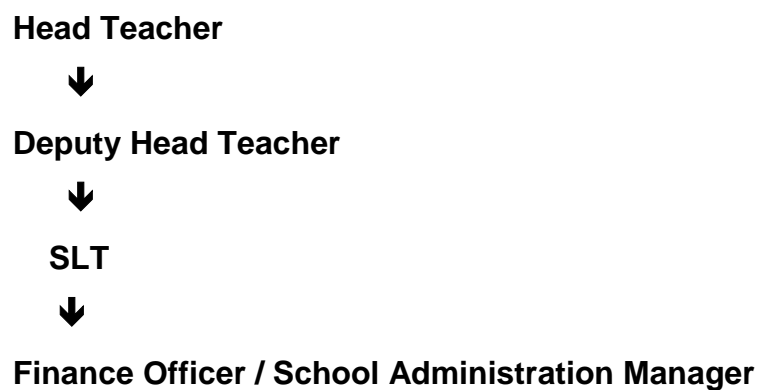
- comply with the school's health and safety policy and procedures at all times;
- take reasonable care for the health and safety of themselves and others when undertaking their work, for example;
  - check classrooms/work areas are safe;
  - check equipment is safe before use;
  - ensure safe working procedures are followed;
- co-operate with managers in complying with relevant health and safety safe systems of work and procedures;
- use all work equipment and substances in accordance with instruction, training and information received;
- wear, use, store, maintain and replace personal protective equipment as appropriate;
- not intentionally or recklessly interfere with or misuse anything provided in the interests of health, safety and welfare;
- take part in and contribute to health and safety inspections, risk assessments etc. as appropriate;
- report
  - accidents, incidents of violence and aggression and near misses;
  - ill health caused by work activities;
  - defective equipment or premises, hazardous situations and other health and safety concerns;
  - report immediately to their Head Teacher/line manager any serious or immediate danger.

## **12. PUPILS**

Pupils, allowing for their age and aptitude, are expected to:

- take personal responsibility for the health and safety of themselves and others
- observe standards of dress consistent with safety and/or hygiene
- observe all the health and safety rules of the school and in particular the instructions of staff given in an emergency
- use and not wilfully misuse, neglect or interfere with things provided for their health and safety

A flow chart showing the management of health and safety hierarchy:



## **PART 3: PROCEDURES AND ARRANGEMENTS**

The following procedures and arrangements have been adopted to ensure compliance with the Governing Board's Statement of Intent.

### **1. LEAD GOVERNOR FOR HEALTH AND SAFETY**

The lead governor with responsibility for scrutiny of health and safety performance is Anne Sheddick.

### **2. ASBESTOS MANAGEMENT**

The asbestos register and asbestos management plan is held at: the finance office.

The Caretaker is responsible for

- making arrangements for dealing with asbestos in compliance with the County Council's policy;
- ensuring that contractors who may be working in areas where asbestos has been identified consult and sign the register;
- ensuring that any changes to the register are notified to Building Services, Property Consultancy;
- informing Property Consultancy immediately on 01296 383238 if any asbestos containing materials are damaged releasing asbestos fibres or may have been released.

For further guidance refer to section 4.2 health and safety policies and procedures  
[https://schoolsweb.buckscc.gov.uk/health-and-safety/health\\_and\\_safety\\_policies/](https://schoolsweb.buckscc.gov.uk/health-and-safety/health_and_safety_policies/)

### **3. AUDIT, REVIEW, PERFORMANCE MEASUREMENT AND ACTION PLAN**

The Head Teacher is responsible for reviewing the School's Health and Safety Policy and ensuring all staff signed a list to acknowledge that they have read and understood the policy.

The Head Teacher is responsible for ensuring the implementation of recommendations of any health and safety audit reports carried out by the County Council

### **4. CATERING**

Dolce is responsible for registering the food premises with the local Environmental Health Officer, District Council;

LEAD SUPERVISOR is responsible for

- monitoring the preparation of food and the nutritional standards of meals;
- the maintenance of satisfactory hygiene standards;
- ensuring that temperature of the refrigerator and freezer are monitored and logged;
- ensuring an adequate schedule of deep cleaning is undertaken.

## **5. CONSULTATION WITH EMPLOYEES**

Any employee appointed as a safety representative by their Association or trade union will be offered suitable facilities to undertake their work.

For further guidance refer to section 1.2 health and safety policies and procedures  
[https://schoolsweb.buckscc.gov.uk/health-and-safety/health\\_and\\_safety\\_policies/](https://schoolsweb.buckscc.gov.uk/health-and-safety/health_and_safety_policies/)

## **6. CONTRACTORS - SELECTION AND MANAGEMENT**

Contractors are selected and managed following guidance and documentation in section 9.4 health and safety policies and procedures

[https://schoolsweb.buckscc.gov.uk/health-and-safety/health\\_and\\_safety\\_policies/](https://schoolsweb.buckscc.gov.uk/health-and-safety/health_and_safety_policies/)

## **7. EDUCATIONAL VISITS**

The Head Teacher is responsible for ensuring that educational visits, including residential visits and any school-led adventure activities, will be risk assessed and organised following guidance produced by the County's Education Visits Co-ordinator.

## **8. ENFORCING AUTHORITY VISITS**

The Head Teacher is responsible for implementing any recommendations following a visit by the Enforcing Authorities and reporting matters requiring authorisation/action to the Governing Board or LA.

## **9. FIRE AND OTHER EMERGENCY ARRANGEMENTS**

The Head Teacher is responsible for

- ensuring fire risk assessment is undertaken and regularly reviewed;
- developing local fire safety procedures to ensure
  - personal emergency evacuation plans (PEEPS) are carried out for people with disabilities, i.e. staff, pupils, visitors;
  - 
  - fire evacuation drills are carried out at least termly;
  - a roll call is taken at the Assembly Point;
  - that no-one attempts to re-enter the building until the all clear is given by the

- emergency services;
- firefighting and fire detection equipment is serviced and maintained annually;
- regular reminders to staff on fire safety.

The Caretaker is responsible for

- maintaining the Fire Log;
- checking daily that evacuation routes remain clear and that final exit doors are openable;
- checking firefighting equipment weekly remains in a useable condition, e.g. fire extinguishers, fire blankets;
- testing the alarms every week from different call points and recording the tests in the Fire Log;
- testing the emergency lighting at appropriate intervals

Emergency procedures covering a range of hazardous situations which may arise in the establishment can be found in the following locations:

Type of emergency procedure	Location(s)
Fire Evacuation Procedure	Grab bag located in admin office
Bomb Alert	"
Gas Leak	"
Electrical Fault	"
Water	"
Storm or Flood Damage	"
Lockdowns	"

The person who discovers the emergency will raise the alarm immediately by the most appropriate means and ensure that the Head Teacher, Deputy Head Teacher or in their absence, a member of the Senior Leadership Team is informed immediately and that where appropriate the emergency services are summoned. A member of the Senior Leadership Team will liaise with the emergency services when they arrive and take advice from them.

**Note: The priorities are as follows:**

- *to ensure the safety of all persons, their removal from danger, their care and the application of first aid and medical treatment where appropriate;*
- *to call the emergency services when appropriate;*
- *to safeguard the premises and equipment, if this is possible without putting persons at risk.*

## 10. FIRST AID

First aid boxes and first aid record books are kept at: In each year block, ARP classroom.

Travelling first aid boxes are kept at: In the ARP classroom.

The Receptionist is responsible for making a termly check of the contents of all first aid boxes.

The nearest medical centre/NHS GP is Cherrymead Surgery, Queensmead Rd, Loudwater, High Wycombe HP10 9XA Tel: 01494 445150

The nearest hospital with accident and emergency facilities is Wexham Park Hospital, Wexham, Slough SL2 4HL Tel: 01753 633000

The following employees are qualified to provide first aid:

Name of Employee	Job Title	Qualification
A Briant	Receptionist	Schools First Aid
J Chaney	Teaching Assistant	Emergency First Aid at Work
M-A Hudson	Teaching Assistant	Schools First Aid
E Lomas	Teaching Assistant	Emergency First Aid at Work
J Miller	Teaching Assistant	Emergency First Aid at Work
J Partridge	Midday Supervisor	Emergency First Aid at Work
A Pearce	Caretaker	TQUK Level 3 Award In Emergency First Aid At Work
V Pusey	Teaching Assistant	Schools First Aid
L Richards	Teaching Assistant	Emergency First Aid at Work
A Starkey	Teaching Assistant	Emergency First Aid at Work
C Taylor	Teaching Assistant	Schools First Aid
A Webb	Teaching Assistant	Emergency First Aid at Work
K Williams	HLTA	Emergency First Aid at Work

For further guidance refer to section 3.2 health and safety policies and procedures  
[https://schoolsweb.buckscc.gov.uk/health-and-safety/health\\_and\\_safety\\_policies/](https://schoolsweb.buckscc.gov.uk/health-and-safety/health_and_safety_policies/)

## 11. HEALTH AND WELL-BEING

The Head Teacher is responsible for monitoring absence owing to stress related illness and promoting wellbeing.

For further guidance refer to section 8.4 health and safety policies and procedures  
[https://schoolsweb.buckscc.gov.uk/health-and-safety/health\\_and\\_safety\\_policies/](https://schoolsweb.buckscc.gov.uk/health-and-safety/health_and_safety_policies/)

### **11.1 Occupational Health**

Access to occupational health services is through PAM Group via HR

### **11.2 Employees Assistance Programme**

Employees Assistance is provided by PAM Assist and is a completely independent and confidential personal support service, which is available 365 days 24 hours;  
Freephone number: 0800 882 4102

## **12. INCIDENT REPORTING AND INVESTIGATION**

The Head Teacher is responsible for reporting accidents, incidents and near misses, as soon after the event, as possible using their AssessNet username and password to access the on-line recording system.

Link to AssessNet: <http://www.assessnet.co.uk>

The Head Teacher/School Administration Manager is responsible for contacting the Health and Safety Team immediately to report a serious incident (accident, incident (physical assault, threat, verbal abuse) or near miss). Where appropriate/practicable a Health and Safety Adviser will visit the school the same day to provide support and investigate the incident. Telephone 01296 382906

Minor injuries to non-employees (i.e. pupils and visitors) where first aid is given will be reported on the First Aid Record of Treatment form. These forms are kept in the ARP classroom.

The Head Teacher will investigate all incidents and act on findings to prevent a reoccurrence or similar accident/incident. Where accidents are found to be caused by faulty plant, equipment, premises or unsafe systems of work action must be taken to remove or isolate the hazard and warn people until the necessary modifications or repairs can be made.

For further guidance refer to section 3.1 health and safety policies and procedures  
[https://schoolsweb.buckscc.gov.uk/health-and-safety/health\\_and\\_safety\\_policies/](https://schoolsweb.buckscc.gov.uk/health-and-safety/health_and_safety_policies/)

## **13. INSPECTIONS**

Routine inspections of the premises to ensure safe working practices are being followed will be carried out by the Head Teacher.

Inspections of individual departments and specific work areas will be carried out by Heads of Department or nominated staff.



Formal health and safety inspections will be carried out termly with the Health and Safety Governor.

For further guidance and information refer to section 2.5 and 2.5a health and safety policies and procedures

[https://schoolsweb.buckscc.gov.uk/health-and-safety/health\\_and\\_safety\\_policies/](https://schoolsweb.buckscc.gov.uk/health-and-safety/health_and_safety_policies/)

## **14. INFORMATION, INSTRUCTION AND TRAINING**

### **14.1 INFORMATION AND ADVICE**

A Health and Safety Law Poster is displayed in: staffroom

Health and safety advice is available from the Health and Safety Team via the HR Service Desk.

Telephone: 01296 382233

E-mail: [hrrservicedesk@buckinghamshire.gov.uk](mailto:hrrservicedesk@buckinghamshire.gov.uk)

### **14.2 HEALTH AND SAFETY TRAINING:**

#### **14.2.1 Induction**

Health and safety induction training will be provided for all new employees and for work experience placement students by a member of the admin staff which covers the following guidance and documentation that is available from [https://schoolsweb.buckscc.gov.uk/health-and-safety/health\\_and\\_safety\\_policies/](https://schoolsweb.buckscc.gov.uk/health-and-safety/health_and_safety_policies/)

*Bucks Council Health and Safety Policy*

*Codes of Safe Practice and Guidance*

*Premises Asbestos Log*

*Job Based Risk Assessment and other appropriate assessments*

*Accident Reporting Arrangements*

*Safe Use of Work Equipment*

*Good Housekeeping, Waste Disposal and Cleaning Arrangements*

*Special Hazards/Responsibilities Associated with their Work Activity*

*Safe Practice in School Swimming*

*School Health and Safety Policy*

*Education Visits Policy Document*

*Premises Legionella Log*

*Fire and other Emergency Arrangements*

*First Aid Arrangements*

*Procedures for Hazardous Substances*

*Hazard Reporting and Maintenance Procedures*

*Special Needs of Young Employees (e.g. Work Experience Placements)*

#### **14.2.2 Training Records and Training Needs Identification**

The Head Teacher/School Administration Manager is responsible for identifying training

and refresher training needs and keeping health and safety training records. Staff and governors named below have received or will receive health and safety training in the following areas (amend as appropriate):

<i>Asbestos Awareness</i>	<i>IOSH Working Safely</i>	<i>Personal Safety of Employees</i>
<i>COSHH Awareness</i>	<i>Legionella</i>	<i>Pool Carers Course/Refresher</i>
<i>Emergency First Aid at Work</i>	<i>Load Risk Assessor for Moving and Handling</i>	<i>Pool Safety Awareness for head teachers</i>
<i>Fire Risk Assessor</i>	<i>Manual Handling (Loads)</i>	<i>Safe Playground Inspection</i>
	<i>Minibus Training (County)</i>	<i>Supporting Pupils with Medical Conditions (formerly Managing Medicines)</i>
<i>Food Safety in Catering</i>	<i>Paediatric Moving and Handling with/without hoists</i>	<i>Team Teach training</i>
<i>Governor's Role in Health and Safety</i>	<i>Paediatric First Aid (for schools with children below 5)</i>	<i>Visual Tree training</i>
<i>IOSH Managing Safely/Refresher</i>	<i>PAT testing</i>	<i>Working at Height</i>

### **14.2.3 Strategic Health and Safety Management and Premises Management Training**

#### **Specific course for Governors**

- The Governor Role for Health and Safety: Anne Sheddick

#### **Courses for Senior Leadership Teams**

- Asbestos Awareness (head teachers/health and safety coordinators): ■ Head Teacher
- Fire Risk Assessor training (for head teachers/Health and Safety Coordinators) : Head Teacher
- IOSH Managing Safely/Managing Safely Refresher 5 day/1 day course (for Head Teachers/Health and Safety Coordinators):
- Legionella Training (Head Teachers/Health and Safety Coordinators): ■ Head Teacher
- Managing the Personal Safety of Staff : ■ Head Teacher

#### **14.2.4 Curriculum/Subject Specific Health and Safety Training**

##### **Primary and Secondary PE and School Sport**

- ASA National Curriculum Training Programme (NCTP) for School Swimming: PE Leader

##### **Primary Food Technology and Occasional Catering Events**

- Level 2 Food Hygiene and Safety for Catering Award: Mrs A Carr & Mrs G Randall

#### **14.2.5 Occupational Risks**

Emergency First Aid at Work: School Administration Manager  
Fire Awareness/Fire Extinguisher Training (available through GDT Fire Extinguishers Ltd):  
School Administration Manager/Finance Officer

- Personal Safety: Head Teacher
- Supporting Pupils with Medical Conditions (includes Managing Medicines): School Administration Manager/Receptionist
- Team Teach training: Deputy Head Teacher

#### **14.2.6 Caretaking/Site Management**

- Asbestos Awareness : Caretaker
- COSHH Health and Safety Workshop: Caretaker
- IOSH Working Safely course – a 1 day basic health and safety course : Caretaker
- Legionella: Caretaker
- Manual Handling : Caretaker
- Working at Height: Caretaker

### **15. LEGIONELLA**

The Caretaker is the Premises Responsible Person for the management of Legionella

The Caretaker is the Nominated Legionella Controller who has been trained to be responsible for checking water temperatures and flushing appropriate outlets as part of the Legionella programme

For further guidance refer to section 4.4 health and safety policies and procedures  
[https://schoolsweb.buckscc.gov.uk/health-and-safety/health\\_and\\_safety\\_policies/](https://schoolsweb.buckscc.gov.uk/health-and-safety/health_and_safety_policies/)

## **16. LETTINGS**

The Finance Officer is responsible for co-ordinating lettings of the premises and for giving health and safety including emergency information to hirers.

## **17. NOISE**

Any employee concerned about the noise levels at work should report the matter to the Head Teacher who will arrange for remedial action or for an assessment to be made by the Health and Safety Team or a specialist contractor.

For further guidance refer to section 9.3 health and safety policies and procedures  
[https://schoolsweb.buckscc.gov.uk/health-and-safety/health\\_and\\_safety\\_policies/](https://schoolsweb.buckscc.gov.uk/health-and-safety/health_and_safety_policies/)

## **18. OUTDOOR PLAY EQUIPMENT**

The Caretaker is responsible for ensuring outdoor play equipment and safety surfaces is

- regularly inspected by person who has attended Safe Playground Inspection course;
- inspected and maintained annually by a competent contractor;
- repaired or taken out of use, as required.

The Caretaker is responsible for inspecting the equipment and safety surfacing weekly.

The Head Teacher is responsible for ensuring outdoor play equipment is adequately supervised when in use.

For further guidance refer to section 10.7 health and safety policies  
[https://schoolsweb.buckscc.gov.uk/health-and-safety/health\\_and\\_safety\\_policies/](https://schoolsweb.buckscc.gov.uk/health-and-safety/health_and_safety_policies/)

## **19. PERSONAL PROTECTIVE EQUIPMENT (PPE)**

Suitable Personal Protective Equipment (PPE) goggles, gloves, hearing protection etc will be provided free of charge, where identified as necessary by a risk assessment.

All employees are responsible for informing the Finance Officer, when they become aware of a need to repair or replace PPE, which they use.

For further guidance refer to section 11.1 health and safety policies  
[https://schoolsweb.buckscc.gov.uk/health-and-safety/health\\_and\\_safety\\_policies/](https://schoolsweb.buckscc.gov.uk/health-and-safety/health_and_safety_policies/)

## **20. PORTABLE ELECTRICAL APPLIANCES**

The Head Teacher is responsible for ensuring that portable electrical appliance testing is carried out at the frequencies in section 10.3 health and safety policies and procedures

[https://schoolsweb.buckscc.gov.uk/health-and-safety/health\\_and\\_safety\\_policies/](https://schoolsweb.buckscc.gov.uk/health-and-safety/health_and_safety_policies/)

Staff should not bring electrical equipment onto the school site unless they have authorisation and the appliances have been portable appliance tested.

## **21. RISK ASSESSMENT**

### **21.1 GENERAL RISK ASSESSMENT**

General risk assessment will be coordinated by the Head Teacher following guidance and documentation in section 2.1 health and safety policies and procedures

[https://schoolsweb.buckscc.gov.uk/health-and-safety/health\\_and\\_safety\\_policies/](https://schoolsweb.buckscc.gov.uk/health-and-safety/health_and_safety_policies/)

They will be responsible for ensuring risk assessment relating to jobs, locations, work equipment, chemicals and activities are produced by appropriate persons and appropriately communicated to staff and ensuring the actions required are implemented.

### **21.2 FIRE RISK ASSESSMENT**

The Head Teacher is the Responsible Person under the Fire Safety Reform Order;

The Head Teacher is the Competent Person (must hold a IOSH Managing Safely Certificate (or equivalent) and attended Fire Risk Assessor training) who is responsible for:

- ensuring a fire risk assessment is carried at regular intervals by a competent Fire Risk Assessor contractor;
- regularly reviewing the fire risk assessment;

For further guidance refer to section 3.3 health and safety policies and procedures

[https://schoolsweb.buckscc.gov.uk/health-and-safety/health\\_and\\_safety\\_policies/](https://schoolsweb.buckscc.gov.uk/health-and-safety/health_and_safety_policies/)

### **21.3 MANUAL HANDLING RISK ASSESSMENTS (LOADS)**

Manual handling risk assessments will be carried out by the Head Teacher following guidance and documentation in section 5.2 health and safety policies and procedures

[https://schoolsweb.buckscc.gov.uk/health-and-safety/health\\_and\\_safety\\_policies/](https://schoolsweb.buckscc.gov.uk/health-and-safety/health_and_safety_policies/)

They will be responsible for ensuring any actions required are implemented, including training needs.

## **21.4 MOVING AND HANDLING RISK ASSESSMENTS (PEOPLE)**

Moving and handling risk assessments will be carried out by the Deputy Head Teacher following guidance and documentation in section 5.2 health and safety policies and procedures

[https://schoolsweb.buckscc.gov.uk/health-and-safety/health\\_and\\_safety\\_policies/](https://schoolsweb.buckscc.gov.uk/health-and-safety/health_and_safety_policies/)

They will be responsible for ensuring:

- assessments are regularly reviewed by an appropriate person and actions required are implemented;
- appropriate people attend
  - Paediatric Moving and Handling training/refresher training annually:
  - Load Risk Assessor training/refresher training annually

## **21.5 COMPUTERS AND WORKSTATION ASSESSMENTS**

The School Administration Manager is responsible for identifying 'users' and ensuring workstation assessments are undertaken (using the online system Workstation Safety Plus) and any corrective action required implemented.

The following employees are classified as users of display screen equipment; they will be entitled to a regular eye test and spectacles if recommended by the optician for DSE use.

<b>Name of Employees</b>	<b>Job Title</b>
A Briant	Receptionist
E Cameron	Deputy Head Teacher
N Gibbons	Assistant Deputy Head Teacher/SENDCo
A Majcher	Head Teacher
K Moore	Finance Officer
S Piggott	School Administration Manager

For further guidance refer to section 6.1 health and safety policies and procedures

[https://schoolsweb.buckscc.gov.uk/health-and-safety/health\\_and\\_safety\\_policies/](https://schoolsweb.buckscc.gov.uk/health-and-safety/health_and_safety_policies/)

## **21.6 VIOLENCE AND AGGRESSION TO STAFF**

Assessments of the risks of violence and aggression to staff will be carried out by the Head Teacher following guidance and documentation in section 7.1 health and safety policies and procedures

[https://schoolsweb.buckscc.gov.uk/health-and-safety/health\\_and\\_safety\\_policies/](https://schoolsweb.buckscc.gov.uk/health-and-safety/health_and_safety_policies/)

## **21.7 RISK ASSESSMENTS OF CURRICULUM ACTIVITIES**

Risk Assessments for curriculum activities will be carried out by relevant Heads of Department/Heads of Faculty using guidance from Bucks Grid for Learning, CLEAPSS, Association for Science Education (ASE), Association for Physical Education (AfPE), Bucks Council Health and Safety Policies and other recognised sources of competent advice

## **21.8 RISK ASSESSMENTS FOR HAZARDOUS SUBSTANCES**

The Caretaker is responsible for

- ensuring an inventory is kept of hazardous substances:
- COSHH data sheets are available and risk assessments are produced and regularly reviewed by appropriate persons for Science, Design Technology, Caretaking and Cleaning, Swimming Pool Maintenance, Catering, Grounds Maintenance;
- ensuring that the assessments have been communicated to staff and ensuring the actions required including provision of training are implemented.

Inventories of hazardous substances used in the school are maintained by the following employees at the locations specified:

- |                           |               |
|---------------------------|---------------|
| • Caretaking and Cleaning | the Caretaker |
| • Grounds Maintenance     | external      |

For further guidance refer to section 4.1 health and safety policies and procedures  
[https://schoolsweb.buckscc.gov.uk/health-and-safety/health\\_and\\_safety\\_policies/](https://schoolsweb.buckscc.gov.uk/health-and-safety/health_and_safety_policies/)

## **22. SAFE PLANT AND WORK EQUIPMENT**

Plant and equipment will be inspected, maintained and, where necessary, tested by appropriate contractors appointed by the Governing Board /County.

Any problems or defects regarding plant and equipment should be reported to the Head Teacher.

The following equipment has been identified as likely to involve a specific risk to health and safety and its use, inspection and repair is therefore restricted to employees who have been appropriately trained.

### **22.1 CARETAKING AND CLEANING EQUIPMENT**

The Caretaker is responsible for ensuring that

- caretaking and cleaning equipment is regularly inspected and maintained; this

- includes powered cleaning equipment, power and hand tools
- users/operators are trained and supervised;

The Caretaker has been authorised and trained to use caretaking and cleaning equipment.

For further guidance refer to section 9.15

[https://schoolsweb.buckscc.gov.uk/health-and-safety/health\\_and\\_safety\\_policies/](https://schoolsweb.buckscc.gov.uk/health-and-safety/health_and_safety_policies/)

## **22.2 CATERING EQUIPMENT (*dough mixers, slicing machines, potato peelers etc*)**

The DT leader is responsible for ensuring that

- catering equipment is regularly inspected and maintained;
- users/operators are trained and supervised;

For further guidance refer to section 9.9 health and safety policies and procedures

[https://schoolsweb.buckscc.gov.uk/health-and-safety/health\\_and\\_safety\\_policies/](https://schoolsweb.buckscc.gov.uk/health-and-safety/health_and_safety_policies/)

## **22.3 GROUNDS MAINTENANCE EQUIPMENT**

First Grounds Maintenance is responsible for ensuring that

- grounds maintenance equipment is regularly inspected and maintained;
- users/operators are trained and supervised;

First Grounds Maintenance have been authorised and trained to use grounds maintenance equipment;

For further guidance refer to section 10.1 health and safety policies and procedures

[https://schoolsweb.buckscc.gov.uk/health-and-safety/health\\_and\\_safety\\_policies/](https://schoolsweb.buckscc.gov.uk/health-and-safety/health_and_safety_policies/)

## **22.4 MANUAL HANDLING EQUIPMENT (LOADS)**

This includes equipment used for the manual handling of loads

The Caretaker is responsible for ensuring that manual handling equipment such as sack barrows, flat-bed, trolleys, pallet trucks etc are maintained in a safe condition

For further guidance refer to section 5.1 health and safety policies and procedures

[https://schoolsweb.buckscc.gov.uk/health-and-safety/health\\_and\\_safety\\_policies/](https://schoolsweb.buckscc.gov.uk/health-and-safety/health_and_safety_policies/)



## **22.5 WORKING AT HEIGHT - ACCESS EQUIPMENT**

The Caretaker has overall responsibility for the selection, inspection, and maintenance of all access equipment, e.g. leaning ladders, stepladders, tower scaffolds, powered access equipment, fall arrest equipment.

The Head Teacher is responsible for ensuring appropriate training is provided, employees are appropriately supervised and that suitable risk assessments are carried out.

For further guidance refer to section 10.2 health and safety policies and procedures [https://schoolsweb.buckscc.gov.uk/health-and-safety/health\\_and\\_safety\\_policies/](https://schoolsweb.buckscc.gov.uk/health-and-safety/health_and_safety_policies/)

## **22.6 EQUIPMENT AND MACHINERY IN CURRICULUM AREAS**

### **22.6.1 DESIGN AND TECHNOLOGY EQUIPMENT**

The DT leader is responsible for ensuring that

- design technology equipment is regularly inspected, maintained and serviced annually;
- local exhaust ventilation systems are serviced and maintained annually;
- faulty equipment is taken out of use and repaired or removed;
- users/operators of equipment are trained and supervised;

### **22.6.2 PHYSICAL EDUCATION EQUIPMENT (PE)**

The PE leader is responsible for ensuring that

- PE equipment is regularly inspected, maintained and serviced annually by a competent contractor;
- faulty equipment is taken out of use and repaired or removed;
- cleaning schedule for gym and sports hall floors is implemented;

### **22.6.3 STAGE LIGHTING**

The Caretaker is responsible for ensuring that

- stage lighting equipment is regularly inspected, and portable appliance tested at appropriate intervals by a competent contractor

## **23. SEVERE WEATHER**

The Head Teacher is responsible for making arrangements to ensure safe access and egress during adverse weather, e.g. snow and ice.

The Caretaker is responsible for clearing and gritting appropriate pedestrian and vehicle

routes on the site.

For further guidance refer to section 9.7 health and safety policies and procedures  
[https://schoolsweb.buckscc.gov.uk/health-and-safety/health\\_and\\_safety\\_policies/](https://schoolsweb.buckscc.gov.uk/health-and-safety/health_and_safety_policies/)

## **24. SITE SAFETY, HOUSE KEEPING AND WASTE MANAGEMENT**

### **24.1 SITE SAFETY**

All employees and governors must report any hazards to the Head Teacher who will arrange for repairs or action to remove hazard.

### **24.2 LOCATIONS OF MAIN SERVICE ISOLATION POINTS**

The locations of the positions of all main service isolation points are as follows:

Water	Outside the library, towards Y3
Electricity	Caretaker's room
Gas	Y4 cupboard & boiler room

### **24.3 HOUSEKEEPING**

All staff are responsible for ensuring the good housekeeping of their own workrooms, for example, offices, and related storage areas.

### **24.4 CLEANING ARRANGEMENTS**

All members of staff are responsible for clearing up spillages, which occur whilst they are in charge of the area concerned. Other spillages, leaks or wet floors should be reported to the Head Teacher who will arrange for them to be cleared.

The school will be cleaned by: Wyclean every day at:7pm. Staff should avoid areas where floors have been wet mopped.

Spill kits are kept in the following: Caretaker's room

### **24.5 WASTE MANAGEMENT**

Rubbish awaiting collection must never be left where it obstructs escape routes or could aid the production and spread of fire and smoke.

The Head Teacher is responsible for arranging safe disposal of hazardous, special and/or clinical waste.

The Caretaker is responsible for ensuring

- waste is collected daily and stored in appropriately sited secure containers;
- waste containers are secured in either a compound or by being chained.

## **25. SITE SECURITY AND VISITORS**

All visitors must report to reception where they will be asked to sign the visitors' book and wear a visitor's badge.

The care taker is responsible for unlocking and locking the building, arming and disarming security alarms etc

## **26. SMOKING**

The Head Teacher will ensure that

- all persons coming onto the school site understand that smoking is prohibited including the grounds and in school vehicles;
- information on the no smoking policy is included in the lettings policy.

For further guidance refer to section 8.1 health and safety policies and procedures

[https://schoolsweb.buckscc.gov.uk/health-and-safety/health\\_and\\_safety\\_policies/](https://schoolsweb.buckscc.gov.uk/health-and-safety/health_and_safety_policies/)

## **27. SUPPORTING PUPILS WITH MEDICAL CONDITIONS**

The Head Teacher is responsible for writing or adopting the County Model Policy for Supporting Pupils with Medical Conditions following the statutory guidance issued by the DfE.

The Head Teacher is the accountable person for implementing the school's policy on Supporting Pupils with Medical Conditions.

The Receptionist is responsible for

- keeping a log of pupil's medication;
- ensuring medication remains in date;
- ensuring consent forms are completed

The Receptionist/School Administration Manager is responsible for undertaking and reviewing Individual Health Care Plans using the template available in section 8.9.

The Receptionist is responsible for compiling an inventory of pupils who have been diagnosed with asthma or have been prescribed a salbutamol inhaler.

The Receptionist/School Administration Manager is responsible for management of controlled drugs following guidance and documentation.

For further guidance refer to section 8.9 health and safety policies and procedures  
[https://schoolsweb.buckscc.gov.uk/health-and-safety/health\\_and\\_safety\\_policies/](https://schoolsweb.buckscc.gov.uk/health-and-safety/health_and_safety_policies/)

## **28. SWIMMING**

The PE leader is responsible for school swimming and ensuring staff are appropriately trained.

## **29. TEAM TEACH**

The Deputy Head Teacher is responsible for arranging Team Teach training and monitoring its effectiveness.

## **30. VEHICLES**

The Head Teacher is responsible, in conjunction with the driver, for ensuring that vehicles kept or hired by the school are operated in accordance with the law and with the County Council policy contained in *"Regulations for the Use of Vehicles 2014"*

The Head Teacher is responsible for ensuring that all employees who drive for work has a valid licence and business insurance (business insurance is available for school from County Insurance)

For further guidance refer to section 9.12 health and safety policies and procedures  
[https://schoolsweb.buckscc.gov.uk/health-and-safety/health\\_and\\_safety\\_policies/](https://schoolsweb.buckscc.gov.uk/health-and-safety/health_and_safety_policies/)

### **30.1 On-Site Vehicle Movements**

The segregation of traffic and pedestrians will be controlled by the following measures: front path is coned off each day at the beginning and the end.

## **31. WORK EXPERIENCE**

The Deputy Head Teacher is responsible for

- co-ordinating work experience placements;
- ensuring risk assessments are completed by the employer;
- ensuring students are visited in their placements;
- liaising with the Buckinghamshire Education Business Partnership where appropriate

## **32. REVIEW OF POLICY**

This policy will be reviewed annually.